

MANIFEST™ v52



ARCH. |

SELECTIONS from the INDA 6

MANIFEST™

CREATIVE RESEARCH GALLERY
AND DRAWING CENTER

volume 52

ARCH.

Works Exploring Made Space

Selections

from the 6th International Drawing Annual

MANIFEST is a 501(c)(3) non-profit organization

MANIFEST VOLUME FIFTY-TWO

© 2011 MANIFEST PRESS

All rights reserved. No part of this publication may be reproduced in any way without written permission from the publisher. All rights in each work reproduced herein are retained by the artist/author.

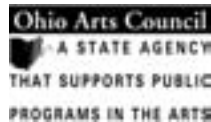
Manifest Creative Research Gallery and Drawing Center
2727 Woodburn Avenue, P.O. Box 6218, Cincinnati, OH 45206
(513) 861-3638

First Printing - March 2011
Designed by Jason Franz
Printed by PrintPelican.com

Cover image by Lance Moon
Back cover image by Paul Baron

THANK YOU!

Manifest's 2010-2011 season
is supported by operating support funding from:





ARCH.

Works exploring Made Space

March 4 - April 1, 2011

Allan Arp

Paul Baron

John Bendel

Nick Conbere

Meghan Duda

Nicholas Germann

Felice Grodin

Delbert Jackson

Susan Klein

Jean-Claude Lajeunie

Willard Lustenader

Ana Martinez

Armin Mühsam

James Rotz

Dana Sink

Jeff Slomba

Greg Stahly

Eric Standley

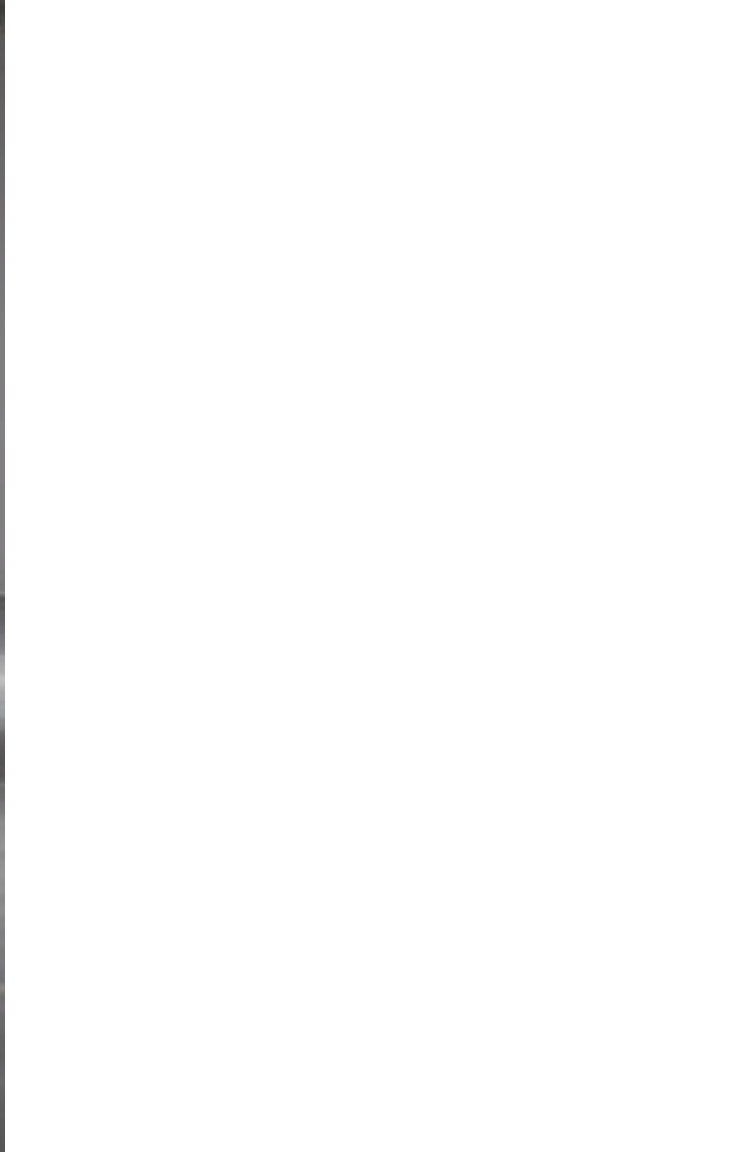
Danny Warner

Naijun Zhang

ARCH. invited artists, architects, designers, and others to submit works that in some way explore the concept of spaces altered by, or created by people. As a component of our reality, space is taken for granted. And our specie's existence seems inevitably driven by our individual and collective impulse to alter this elemental fabric of the universe.

For better or worse humanity's instinctual nest building has shaped our world. ARCH. assembles a diverse array of works for an exhibit that is unified in its consideration of the concept of made space, and intriguing due to the surprising ways in which artists address the subject, and for what is revealed about how humans alter and address space as a medium of life.

For this exhibit 142 artists submitted 337 works for consideration. Twenty-four works by these 20 artists from Connecticut, Florida, Iowa, Kansas, Massachusetts, Michigan, Missouri, New Jersey, North Dakota, Ohio, Pennsylvania, Virginia, West Virginia, Canada, and Spain were selected for presentation in Manifest's Main Gallery and Drawing Room in Cincinnati.



Allan Arp
Piscataway, New Jersey

Slit Gong 6
wood & graphite, 63" x 93" x 48", 2010



Paul Baron
Canton, Massachusetts

Vent
archival pigment print, 11" x 16.5", 2009



John Bendel
Island Heights, New Jersey

Hall
photograph, 12" x 18", 2010



Nick Conbere
Indiana, Pennsylvania

Views from a Geodesic Dome
etching, 15" x 22", 2011



Meghan Duda
Fargo, North Dakota

Tower City #2 [cut]
laser cut archival inkjet print, 16" x 20", 2010



Meghan Duda
Fargo, North Dakota

Grain [cut]
laser cut archival inkjet print, 16" x 16", 2009



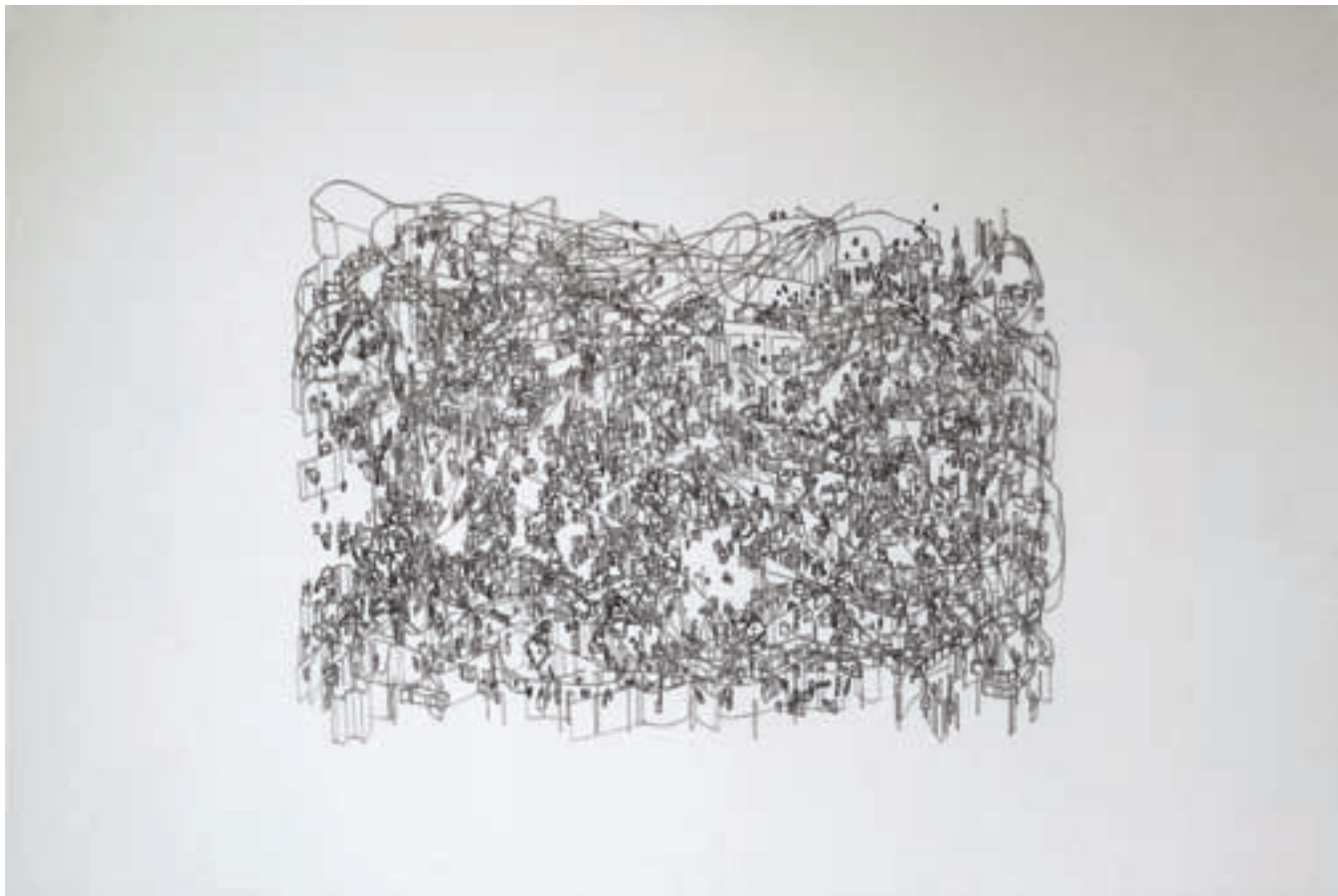
Nicholas Germann
Cincinnati, Ohio

CNC Joinery Adaptation, Panel #3
birch plywood with corian,
32" x 24" x 1.5", 2009



Felice Grodin
Miami Beach, Florida

Surface (1A)
ink on Mylar, 24" x 36", 2005



Delbert Jackson
Coralville, Iowa

Navigator
mixed media on kozo paper,
paper, 9" x 9" x 27", 2010



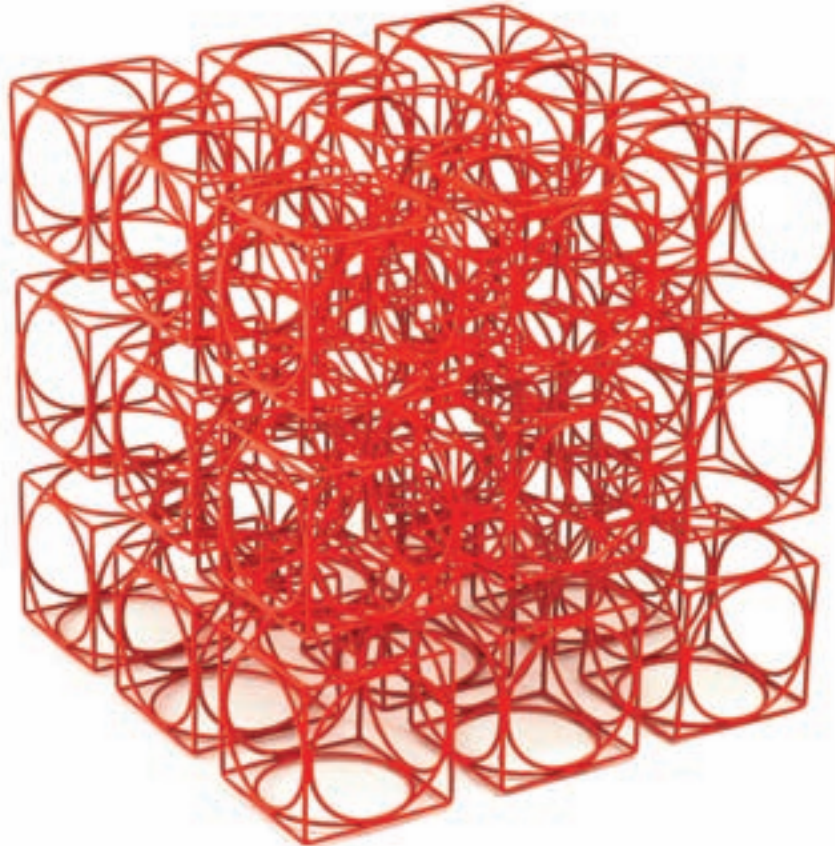
Susan Klein
Philadelphia, Pennsylvania

Untitled (Still Life #32)
oil on panel, 24" x 24", 2010



Jean-Claude Lajeunie
Ile Perrot, Québec, Canada

Circles within Squares
welded-painted steel, 8" x 8" x 8", 1998



Willard Lustenader
New Haven, Connecticut

Cut-outs, 1 Rose
oil on linen, 30" x 40", 2008



Ana Martinez
Madrid, Spain

Parking Lot N°12
digital photography, lambda 130 print,
39" x 25.4", 2009



Armin Mühsam
Maryville, Missouri

Four Foundations
oil on canvas, 35" x 50", 2006



James Rotz
Ann Arbor, Michigan

Light
photo, 15" x 15", 2010



Dana Sink
Harrisburg, Pennsylvania

Placidus
oil on panel, 32" x 48", 2010



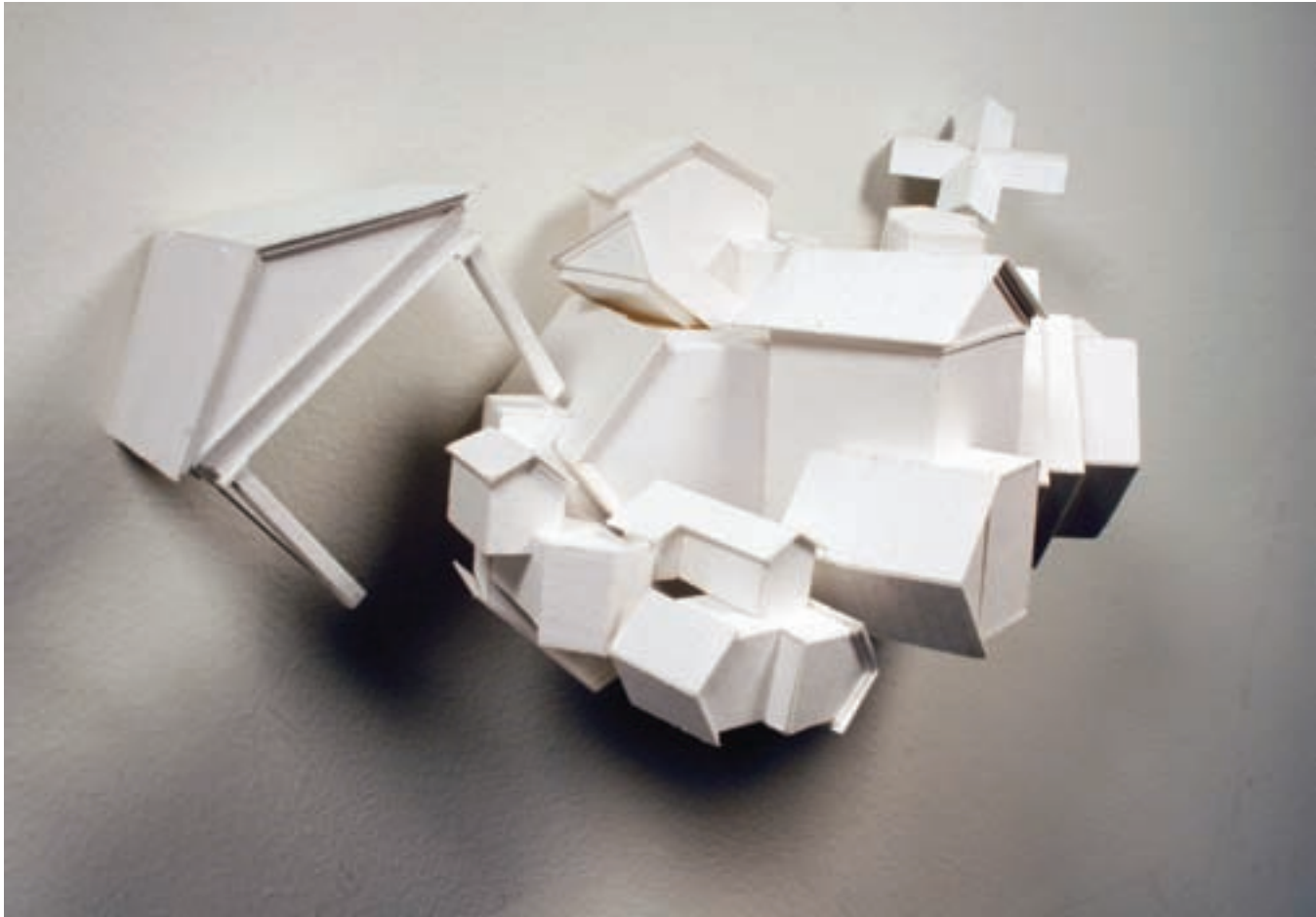
Jeff Slomba
West Haven, Connecticut

Subdivision II
pencil on paper, 28" x 40", 2008



Jeff Slomba
West Haven, Connecticut

Cluster
card paper, 6" x 7" x 5", 2009



Jeff Slomba
West Haven, Connecticut

Untitled
wood, cedar & pine, 29" x 24" x 24", 2010



Greg Stahly

Mount Pleasant, Michigan

Landscape Machine

MDF, metal, plastic, & ceramic, 43" x 16" x 33", 2010



Greg Stahly
Mount Pleasant, Michigan

Plot: Natural Fabrication
MDF, metal, plastic, ceramic, & vinyl,
48" x 18" x 13", 2010





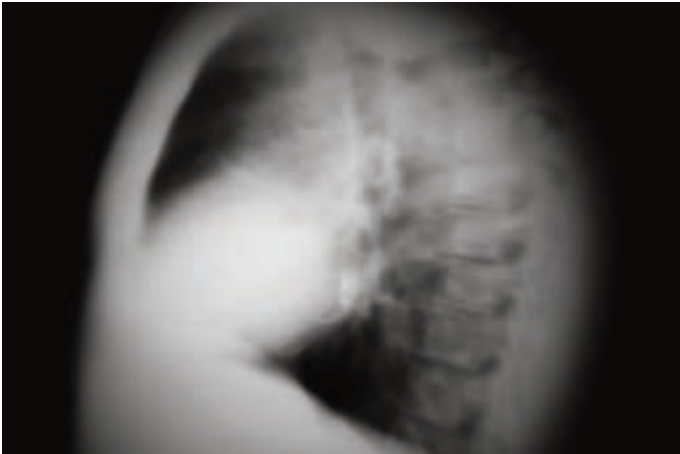
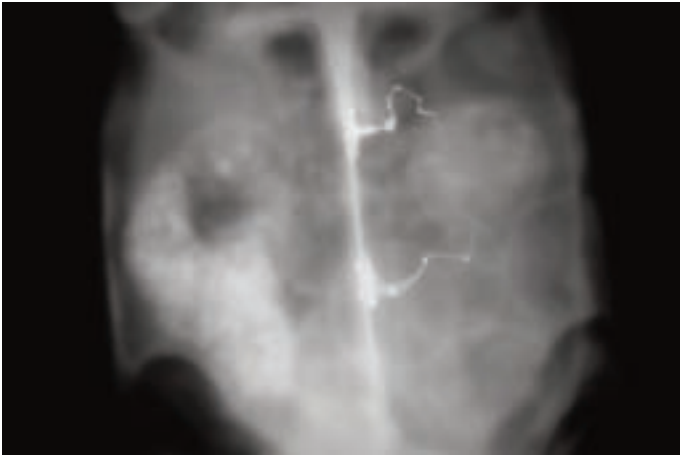
Eric Standley
Blacksburg, Virginia

Either/Or Arch for Ipswich
cut paper, 24" x 18" x 3", 2011



Danny Warner
Manhattan, Kansas

Aphasia Oscura
motion animation, 16x9 aspect ratio, 2010



Naijun Zhang
Morgantown, West Virginia

The Visit
oil on linen, 30" x 20", 2009



Selections

from the 6th International Drawing Annual

March 4 - April 1, 2011

Kristina Estell

Melanie Lowrance

Alexis Manheim

Lance Moon

Leslie Nichols

Roberto Osti

Jennifer Purdum

Shelby Shadwell

Jennifer Ustick

Curated by Jason Franz



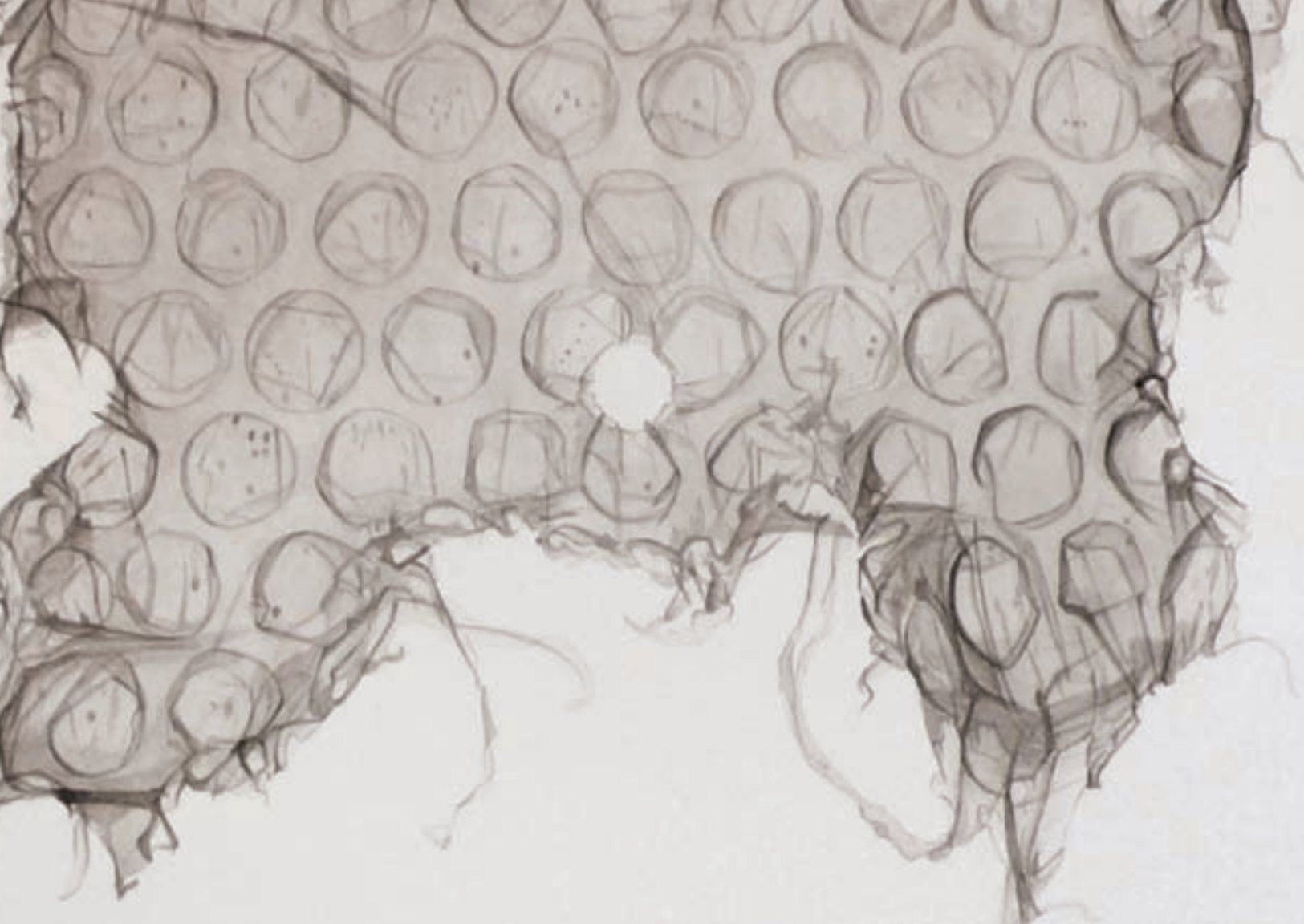


Selections from the International Drawing Annual is the sixth annual presentation of this exhibit, featuring a sampling of artworks to be included in the forthcoming International Drawing Annual 6 exhibit-in-print publication.

The International Drawing Annual book project was launched in 2005 as an extension of Manifest's Drawing Center mission to promote, feature, and explore drawing as a rich and culturally significant art form. The goal of the International Drawing Annual is to support the recognition, documentation, and publication of excellent, current, and relevant works of drawing from around the world.

All works included in each annual are made within three years leading up to its publication. Soft and hardcover versions of the INDA 6 book will be available by early 2012. Previous volumes remain available from the gallery and many bookstores around the country. The books serve as a valuable reflection on the diversity and vitality of drawing active in the world. They are used by artists, collectors, other galleries, fans of art, students, and professors in the classroom for reference about drawing. The books connect people to the practice of drawing through a very open and considerate survey of the art form.

For the INDA 6 an eleven person jury reviewed 1307 entries by 490 artists from around the world. Nine of these works by nine artists are presented here as a sampling of this very exciting and important ongoing project. A list of all the artists included in the INDA 6 publication is available on the Manifest website. Approximately 115 works will be included in the final published book.



Kristina Estell
Duluth, Minnesota

Wrap Study 6
graphite & watercolor on paper,
22" x 22", 2010



Melanie Lowrance
Prairie Village, Kansas

Picking and Choosing
charcoal & pastel on Stonehenge, 50" x 38", 2010



Alexis Manheim
Moss Beach, California

True Love Machine
mixed media on paper, 42" x 46", 2010



Lance Moon
Newaygo, Michigan

Untitled (Child with Bull)
graphite on paper, 44" x 60", 2010



Leslie Nichols
Bowling Green, Kentucky

Looking Forward
typewriter ink on paper, 9.5" x 9.5", 2010



Roberto Osti
Bloomfield, New Jersey

Carpe Diem
red and black colored pencils on paper, 40" x 30", 2010



Jennifer Purdum
Cincinnati, Ohio

Domestic Mori 3
ink on paper, 26" x 36", 2010



Shelby Shadwell
Laramie, Wyoming

Untitled
charcoal on paper, 30" x 22", 2010



Jennifer Ustick
Grand Haven, Michigan

The Spirits of Geometry Have Led Me Here
graphite on paper, 19" x 27", 2010



e quality of rights under the law
by the united states or any state
all have the power to enforce and
sions of this article to take effect
take effect two years after the
ication equality of the law shall
the law shall not be denied by
the united states on account of
state shall have the power by
by appropriate legislation on the
provisions of this amendment
shall take effect after the date
of the ratification of this amend-
ment equality of rights under the
law shall not be denied or abro-
ken by the united states

shall not be denied or abridged
on account of sex the congress shall
legislation on the provi
amendment shall
the date of ratif
rights undet
or abridg
tes or any s
the cogre
to enforc
regislat
f this a
ment sh
year
ratifi
right
shall
dged
or any st

About Manifest

Founded in 2004 by professors and students from area Universities, Manifest Creative Research Gallery and Drawing Center is a 501(c)(3) non-profit arts organization headquartered in the historic urban neighborhood of East Walnut Hills in Cincinnati, Ohio. The 1000 square foot museum-quality street level gallery offers three distinct exhibition spaces, and is minutes away from downtown Cincinnati, and the numerous academic institutions of higher learning in the region. Its central location in the Woodburn Avenue district and DeSales Corner places it within an energetic, creative, and revitalizing community that includes other galleries, shops, restaurants and artists' studios.

The gallery benefits from its location within easy walking distance of a historic neighborhood populated by residents from all walks of life. The galleries are free and open to the public five hours a day, five days a week, presenting works of all kinds by student and professional artists from around the world. The Manifest Drawing Center Studio is located in nearby Madisonville.

Manifest is supported by grants and public donations and has the goal to support student professionalism, integrate the arts into the urban residential community and raise the bar on artistic standards. The mission also includes the exploration of the relationship between art and design, as well as the ongoing support and display of drawing in all its various forms.

Mission

Manifest stands for the quality presentation, experience, and documentation of the visual arts, engaging students, professionals, and the public from around the world through accessible world-class exhibits, studio programs, and publications.

Manifest Gallery

...a neighborhood gallery for the world.

Manifest Press

...take every exhibit home.

Manifest Drawing Center

...because learning to draw is learning to see.

Executive Director

Jason Franz

Assistant Director

Tim Parsley

Administrative Assistant

Joanna Vance

Gallery Assistant

Bruno Zabaglio

Manifest Associates

Kristin Cullen

Trevor Ponder

Interns

Callie Andrews

Jase Flannery (Senior Intern)

Kathleen Harrison (Senior Intern)

Maria Lewis (Senior Intern)

Chrissy Rother

Kevin Varney

Board of Directors

Christina Dakin

Jason Franz

Laura Fisher

Pamela Ginsburg

Debbie Heuer

Brigid O'Kane







MANIFEST
CREATIVE RESEARCH GALLERY AND DRAWING CENTER

2727 woodburn avenue cincinnati, ohio 45206
www.manifestgallery.org